

FT5404 Series High Pressure, High Temperature Solenoid Valve

Ordering Code

FT 5404 - 04 - AC110V - D

Factory Code Model

Port Size
04: G1/2"
06: G3/4"
08: G1"

Standard Voltage
DC12V
DC24V
AC24V 50Hz/60Hz
AC110V 50Hz/60Hz
AC220V 50Hz/60Hz
AC380V 50Hz/60Hz

Wiring Form
Blank Lead Wire Type
D: Joint Connector



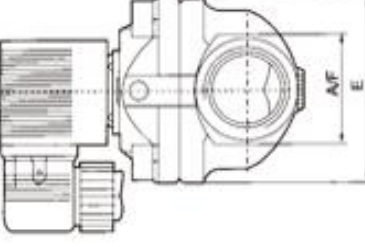
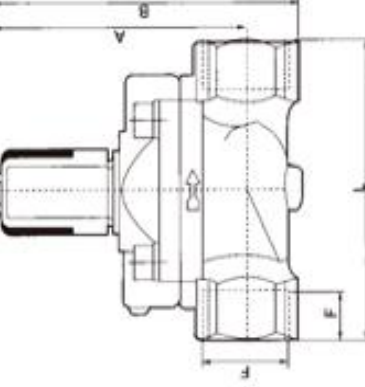
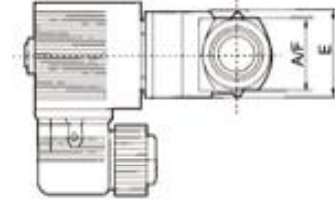
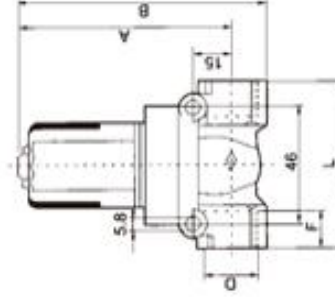
Graphic Symbol



Specification

Model	FT5404-04	FT5404-06	FT5404-08
Working Medium	Air, Water, Oil, Gas		
Motion Pattern	Guide Type		
Type	Normal Close Type		
Aperture of Flow Rate (mm)	12	20	25
KV Value	2.0	5.0	10.0
Joint Pipe Bore	G1/2"	G3/4"	G1"
Working pressure(kgf/cm ²)	Gas: 1 ~ 50, Liquid: 1 ~ 50	Gas: 1 ~ 40, Liquid: 1 ~ 25	Gas: 1 ~ 40, Liquid: 1 ~ 25
Max. Pressure Resistance(kgf/cm ²)	75		60
Operating Temperature Range	-5 ~ +150°C		
Voltage Range	±10%		
Protect Class	IP65		
Power Consumption	AC:5.5VA DC:9W		
Insulation	F Class		
Material of Body	Brass		
Material of Oil Seal	PTFE		

Overall Dimension



Dimension Sheet

Model	Bore(mm)	Port	A	B	F	E	L	A/F
FT5404-04	12.0	G1/2"	83.0	95.5	14	32	65	27
FT5404-06	20.0	G3/4"	93.0	109.0	16	60	100	32
FT5404-08	25.0	G1"	99.5	119.0	18	70	115	40