

# 2K200 Series Angle Seat Valve

## Ordering Code

**2K200 - 15**

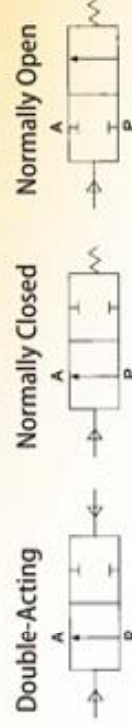
Angle Seat Valve

**Port Size**  
15mm 20mm  
25mm 32mm  
40mm 50mm

**Type**  
SC-Single Action  
Normal Close  
DC-Double Action  
Normal Open



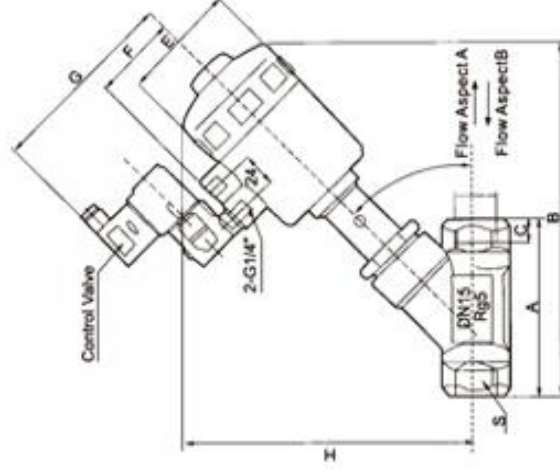
## Graphic Symbol



## Specification

Orifice Size	15	20	25	32	40	50
Port size	G1/2"	G3/4"	G1"	G1 1/4"	G1 1/2"	G2"
KV Value (m <sup>3</sup> /h)	4.2	8	19	27.5	42	55
Max. Working Pressure (MPa)	0 ~ 1.6	0 ~ 1.1	0 ~ 1.1	0 ~ 1.5	0 ~ 1.25	0 ~ 1.0
Min. Pilot Pressure (MPa)	0.39	0.39	0.42	0.5	0.44	0.4
Polyamide	50	50	63	63	63	80
Medium Temperature	-10 ~ +180°C					
Flow Direction	A(Flow Direction Below The Seat) or B(Flow Direction above The Seat)					

## Overall Dimension



## Dimension Sheet

Orifice Size (mm)	Port Size	Actuator Size (∅ mm)		C		∅ E		F		G		H		L	S
		Polyamide	Aluminum Alloy	Polyamide	Aluminum Alloy	Polyamide	Aluminum Alloy	Polyamide	Aluminum Alloy	Polyamide	Aluminum Alloy				
15	G1/2"	50	-	85	173	-	12	6.4	-	4.4	-	112	-	33	27
20	G3/4"	50	-	95	178	-	12	6.4	-	4.4	-	112	-	35	23
25	G1"	63	-	105	212	-	14	8.0	-	5.2	-	120	-	40	41
32	G1 1/4"	63	100	118	236	278	16	8.0	140	52	70	120	138	189	250
40	G1 1/2"	63	100	130	230	270	18	8.0	140	52	70	120	138	189	250
50	G2"	80	125	150	238	300	20	10.0	170	52	83	120	151	250	280